

CMX-TS Series

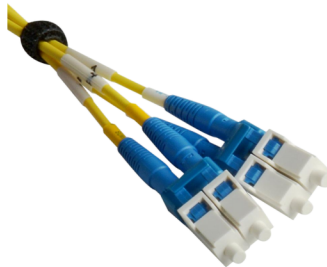
The High quality and cost-effective Camplex CMX-TS series tactical fiber cables are designed for broadcast and Pro-AV deployment applications and feature an outdoor rated crush and impact resistant design. The tough thermoplastic polyurethane core-locked design is perfect for any situation where ordinary PVC jacket cables do not provide adequate protection in the field. All assemblies are multi-stage machine polished and tested for <.55db RL. Available with Senko ST/LC connectors and in 2, 4, 8, or 12 channels.

Features:

- Indoor/Outdoor rated jacket.
- 500um primary acrylate buffer with 900um secondary hard buffer
- Polyurethane core-locked outer jacket provides excellent crush and impact resistance
- Strong, lightweight and extremely durable cable



****Available in 2, 4, 8, or 12 channels****



****Available in ST/LC Connectors****

CMX-TS Series

Specifications:

- **Channels:**
 - 4 Channel for CMX-TS02, CMX-TS04
 - 12 Channel for CMX-TS08, CMX-TS12
- **Core/Cladding:** 9/125 μm
- **Wavelength:** 1310/1550 nm
- **Maximum Cabled Attenuation:** 0.4/0.4 dB/km
- **Primary Coating Diameter:** 245 μm
- **Secondary Coating Diameter:** 900 μm
- **Zero Dispersion Slope:** 0.092 ps.nm²-km
- **Proof Test:** 100
- **Jacket Material:** Polyurethane
- **Buffer Material:** Hard Elastomeric
- **Impact Resistance EIA/TIA-455-25A:** 1,500 Impacts
- **Crush Resistance TIA/EA-455-41A:** 1,800 N/cm
- **Operating Temperature:** -40°F to 185°F (-40°C to +85°C)
- **Storage Temperature:** -94°F to 185°F (-70°C to +85°C)
- **Max Tensile Load (Installed):**
 - 1800 N (400lbs) for CMX-TS02, CMX-TS04
 - 2,100 N (470lbs) for CMX-TS08, CMX-TS12
- **Max Tensile Load (Operating):**
 - 600 N (130lbs) for CMX-TS02, CMX-TS04
 - 700 N (160lbs) for CMX-TS08, CMX-TS12
- **Min Bend Radius (Installation):**
 - 2.2in (5.5cm) for CMX-TS02, CMX-TS04
 - 2.6in (6.5cm) for CMX-TS08, CMX-TS12
- **Min Bend Radius (Operating):**
 - 1.1in (2.8cm) for CMX-TS02, CMX-TS04
 - 1.3 in (3.3cm) for CMX-TS08, CMX-TS12
- **Cable Diameter:**
 - 0.22 in (5.5mm) for CMX-TS02, CMX-TS04
 - 0.26 in (6.5mm) for CMX-TS08, CMX-TS12
- **Cable Weight:**
 - 27 kg/km (18lbs/1000') for CMX-TS02, CMX-TS04
 - 41 kg/km (28lbs/1000') for CMX-TS08, CMX-TS12

Senko Connectors:

- **Lifetime:** 500 Matings
- **Ferrule Diameter (μm):** 125
- **Ferrule Material:** Zirconia
- **Typical Insertion Loss (dB):** 0.08
- **Max Insertion Loss (dB):** 0.2
- **Typical Return Loss (dB):** ≥ 55